

# TM40 Touch Interface Module

## Quick Install Guide

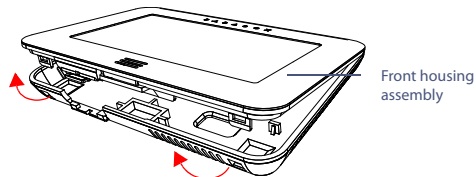
P ▲ R ▲ D O X™

TM40-EI01

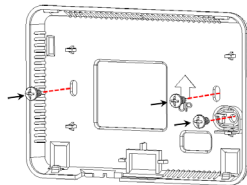


### Installation

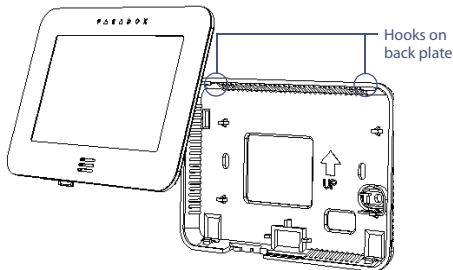
1. Using a screwdriver, pry the front housing assembly from the back plate.



2. Mount the back plate to the wall by securing a M3.5 or #6 screw in each of the dedicated mounting holes and tamper hole. Ensure that the **UP** arrow on the back plate is in the up position.

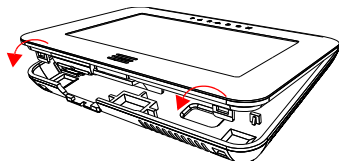


3. Assemble both items by joining the hooks on the back plate to their respective slots on the front housing assembly.

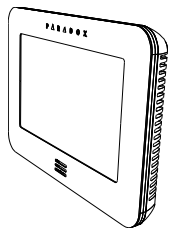


**NOTE: Make sure to connect the unit's 5-pin connector before proceeding to the next step.**

- Secure the front housing assembly to the back plate by snapping it into place.



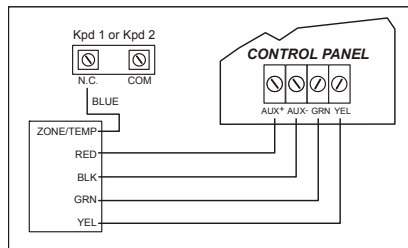
The installation process is complete.



### TM40 to Panel Connections

As shown in the *Wiring Diagram*, the red, black, green, and yellow wires on the TM40 must be connected to their corresponding labeled terminals on the control panel's PCB. The blue wire is connected to either a keypad zone or external temperature sensor.

### Wiring Diagram



### Technical Specifications

Power Input	9 to 16 Vdc
Consumption	110 mA
Display	16-bit, color LCD; 5.4 x 9.5 cm (2.1 x 3.7 in.)
Resolution	480 x 272 pixels
Dimensions	12.4 x 8.1 x 1.6 cm (4.9 x 3.2 x 0.7 in.)
Weight	0.15 kg (0.33 lbs.)
Humidity	5-90%
Sensors	Indoor temperature sensor
Standards	Complies with EN 50131 Security Grade 3 Class II

**Warranty:** For complete warranty information on this product, please refer to the Limited Warranty Statement found on the Web site [www.paradox.com/terms](http://www.paradox.com/terms). Your use of the Paradox product signifies your acceptance of all warranty terms and conditions.  
© 2011 Paradox Ltd. All rights reserved. Specifications may change without prior notice. [www.paradox.com](http://www.paradox.com)