

K07C: Grafica Color Keypad

Description

Grafica sets a new milestone for keypads in the security industry. Grafica features a full color LCD screen and offers the ability to view zone locations on floor plan drawings.

Other features include a photo screensaver, SD memory card slot, downloadable tunes and bitmaps, a smart search engine for users and zones, and an alarm clock.

Overview

1. SD memory card slot
2. Color LCD screen
3. Scroll keys - navigation
4. Temperature sensor
5. Action keys - selection
6. Panic keys
7. Alphanumeric keys

Features

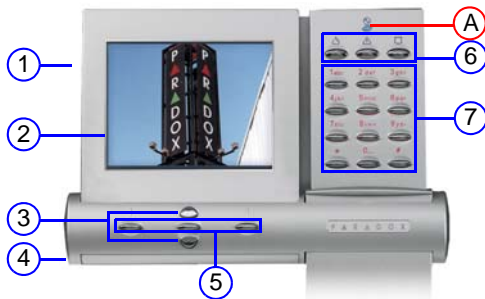
- Full color photo screensaver
- Downloadable tunes and bitmaps
- Smart search engine for users and zones
- Alarm clock
- Indoor temperature sensor
- Outdoor temperature sensor (optional)
- 14 one-touch action buttons
- 3 keypad-activated panic alarms
- Adjustable backlight, contrast and volume

A) Power light:

On = AC power

Off = Power failure

Flash = System is locating the keypad



Using Your Grafica Keypad

Depending on the security level you wish to maintain, your installer can program the keypad to be accessed using one of the following two methods:

Method 1: Using Your Code

- 1) From the System Status screen, enter your code # (PIN).
- 2) Use the Scroll Keys to navigate the User Menu* and highlight an option.
- 3) To enable the option, press the center action key (OK).
- 4) Follow the on-screen instructions.

Method 2: Using One-Touch Options













- 1) From the System Status screen, press the right action key (Menu).
- 2) Use the Scroll Keys to navigate the User Menu* and highlight an option.
- 3) To enable the option, press the center action key (OK).

One-Touch Options must be enabled on all displayed areas otherwise you will be prompted to enter your code # (PIN).

*The User Menu options may vary according to your user profile.

NOTE: To reset a smoke detector after an alarm, press and hold the [*] and [#] keys for two seconds.

Navigation Icons

- Arm System:  Arms entire area when all zones are closed.
- Disarm:  Disarms entire area.
- Stay Arm:  Arms area's perimeter only, which allows you to remain in the protected area.
- Force Arm:  Arms entire area without waiting for all zones to close.
- Instant Arm:  Same as Stay arming, except that an alarm occurs instantly if any armed zones are opened, including entry delay zones.
- Alarm Memory:  Displays a record of recently triggered alarms.
- Trouble:  Displays a list of system troubles.
- Bypass:  Deactivates specific zones the next time the system is armed.
- View Status:  View floor plans and the status of zones, events and areas.
- Programming:  Program user codes, user profiles, timed auto-arming and send test reports.
- Alarm Clock:  Set the alarm clock.
- Keypad Settings:  Set the system tones, LCD contrast, backlight and more.

NOTE: When used with Imperial systems, options are displayed in text format.

Screensaver Mode

The Grafica K07C includes a 9cm (3.5") color LCD screen that can be used as a digital picture frame / screensaver. When the keypad is not being used, the screensaver will cycle through images which can be saved on a standard SD memory card. SD cards must conform to the following:

- Maximum 2GB (SDHC cards not supported)
- Card must be formatted in FAT16
- Files must be stored in the card's root directory (not in folders)

In order for images to be used with the Grafica screensaver, they must be properly reformatted as follows:

- .bmp format
- Resized to 320 x 240 pixels, limited to 24-bit color

How Do I Reformat My Images?

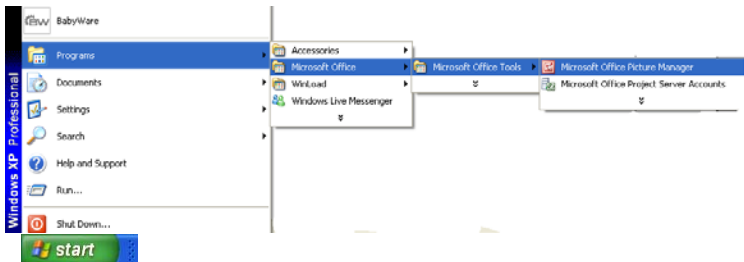
Many programs are available that can be used to reformat your images for use with the screensaver. These include XnView, Photoscape, and IrfanView. However, one of the most widely available imaging software is Microsoft Office™ Picture Manager, which is included with Microsoft Office™.

To reformat images using Picture Manager:

1. Open Microsoft Office™ Picture Manager

To locate this software, click the Windows **Start** icon located at the bottom left corner of your screen and select **Programs > Microsoft Office > Microsoft Office Tools > Microsoft Office Picture Manager** (see Figure 1).

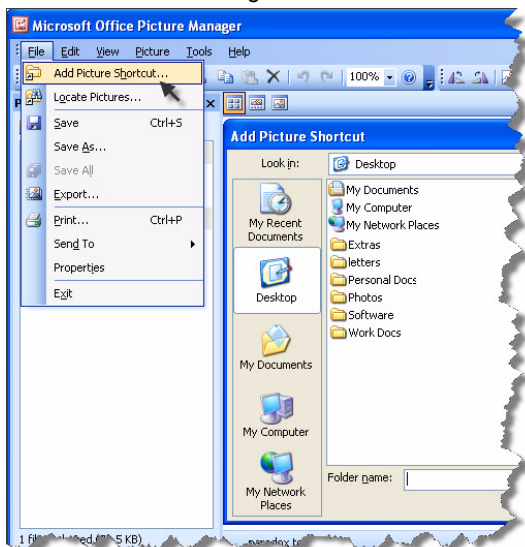
Figure 1



2. Locate your images

To locate the images you wish to use, from the **File** menu, click **Add Picture Shortcut** (see Figure 2). The **Add Picture Shortcut** task pane opens on the left side of the screen. Select the location of the images you wish to use and click **Add**. A link to your selected folder appears in the Picture Shortcuts list.

Figure 2

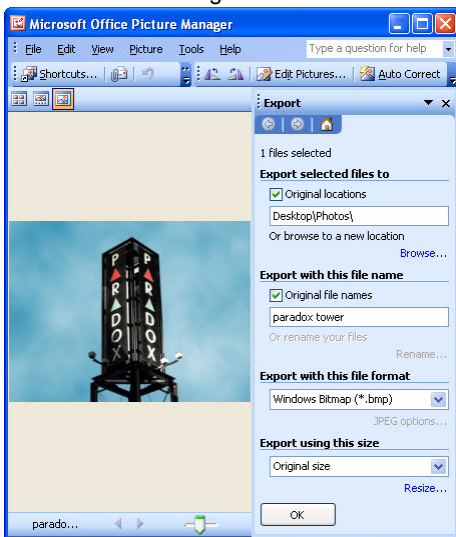


3. Reformat your images

From the shortcut location you created, select the images you wish to reformat. To select multiple images, hold the Ctrl button and click each image. From the **File** menu, click **Export**. The Export task pane opens on the right side of the screen (see Figure 3). From the **Export with this file format** drop-down box, select the **Windows Bitmap** format.

Do **NOT** click OK. Proceed to step 4.

Figure 3



4. **Resize your images**

Click **Resize** located at the bottom of the Export Task pane (see Figure 4). The Resize task pane replaces the Export task pane. Click the **Custom width x height** button (see Figure 5) and enter a **width** of 320 pixels and a **height** of 240 pixels. Click **Return to Export** located at the bottom of the task pane. From the Export task pane, click **OK**. The software reformats and resizes your image(s) and saves them in the original image location as Windows Bitmap images (adds .bmp to the file name). The images are now ready to be saved to your SD card (see “What’s Next?” on page 8).

Figure 4

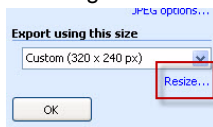
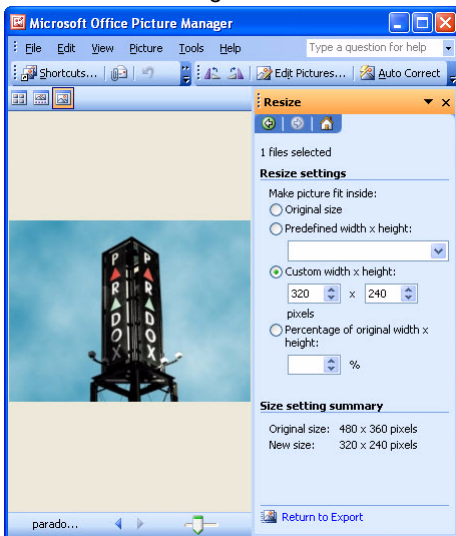


Figure 5



What's Next?

You can now save your reformatted images in your SD card's root directory (not in folders). Once the images are saved, the SD card can be inserted into the designated slot. The images will be automatically displayed when the keypad is in screensaver mode. To keep you informed of system status, after displaying 10 screensaver images, the keypad will cycle back to the main system status screen.



For complete warranty information, please visit www.paradox.com/terms. Your use of the Paradox product signifies your acceptance of all warranty terms and conditions. Imperial, Grafica and BabyWare are trademarks or registered trademarks of Paradox Security Systems Ltd. or its affiliates in Canada, the United States and/or other countries. For the latest product approvals, such as UL and CE, please visit www.paradox.com. © 2009 Paradox Security Systems Ltd. All rights reserved. Specifications may change without prior notice. One or more of the following US patents may apply: 7046142, 6215399, 6111256, 6104319, 5920259, 5886632, 5721542, 5287111, 5119069, 5077549 and RE39406 and other pending patents may apply. Canadian and international patents may also apply.